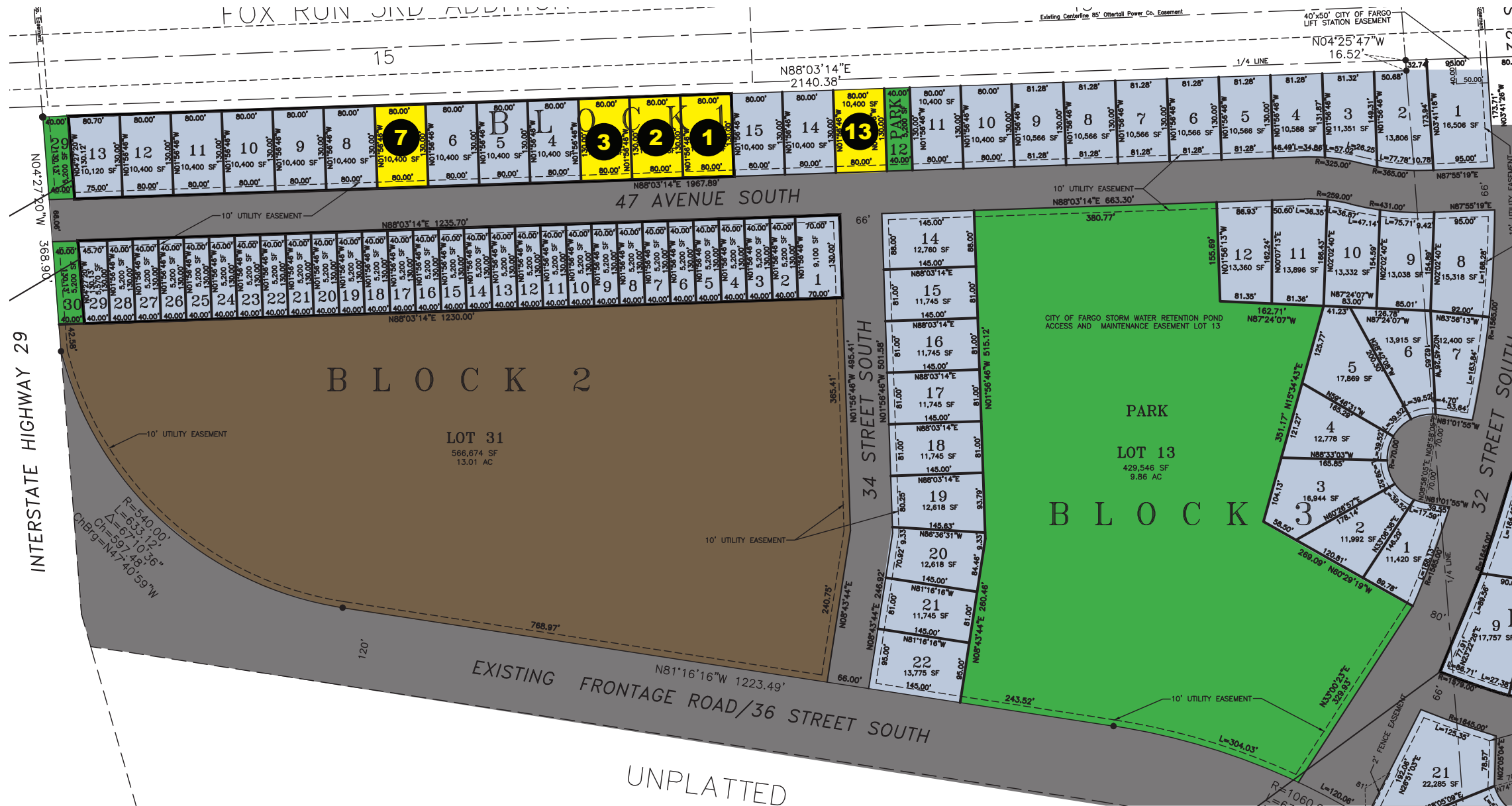


Timber Creek



701 205-4979
 5522 36th Street South
 Fargo, North Dakota 58104
www.dabbberthomes.com



- LOT 13 BLOCK 1 (3401 47th Ave S) 80.00' x 130.00' **\$55,500**
- LOT 1 BLOCK 1 (3431 47th Ave S) 80.00'x 130.00' **\$55,500**
- LOT 2 BLOCK 1 (3445 47th Ave S) 80.00'x 130.00' **\$55,500**
- LOT 3 BLOCK 1 (3457 47th Ave S) 80.00'x 130.00' **\$55,500**
- LOT 7 BLOCK 1 (3509 47th Ave S) 80.00'x 130.00' **\$55,500**

- ROBERTA:** 2 Bedroom • 2 Bathroom • Slab on grade • 2 Stall garage
- MARIA 2.0:** 3 Bedroom • 3 Bathroom • Three level split • 2 Stall garage
- MARIA 3.0:** 3 Bedroom • 3 Bathroom • Three level split • 3 Stall garage
- CASCADE 3.0:** 4 Bedroom • 3 Bathroom • Two Story • 3 Stall garage
- ROCHELLE:** 3 Bedroom • 3 Bathroom • Two Story • 2 Stall garage

