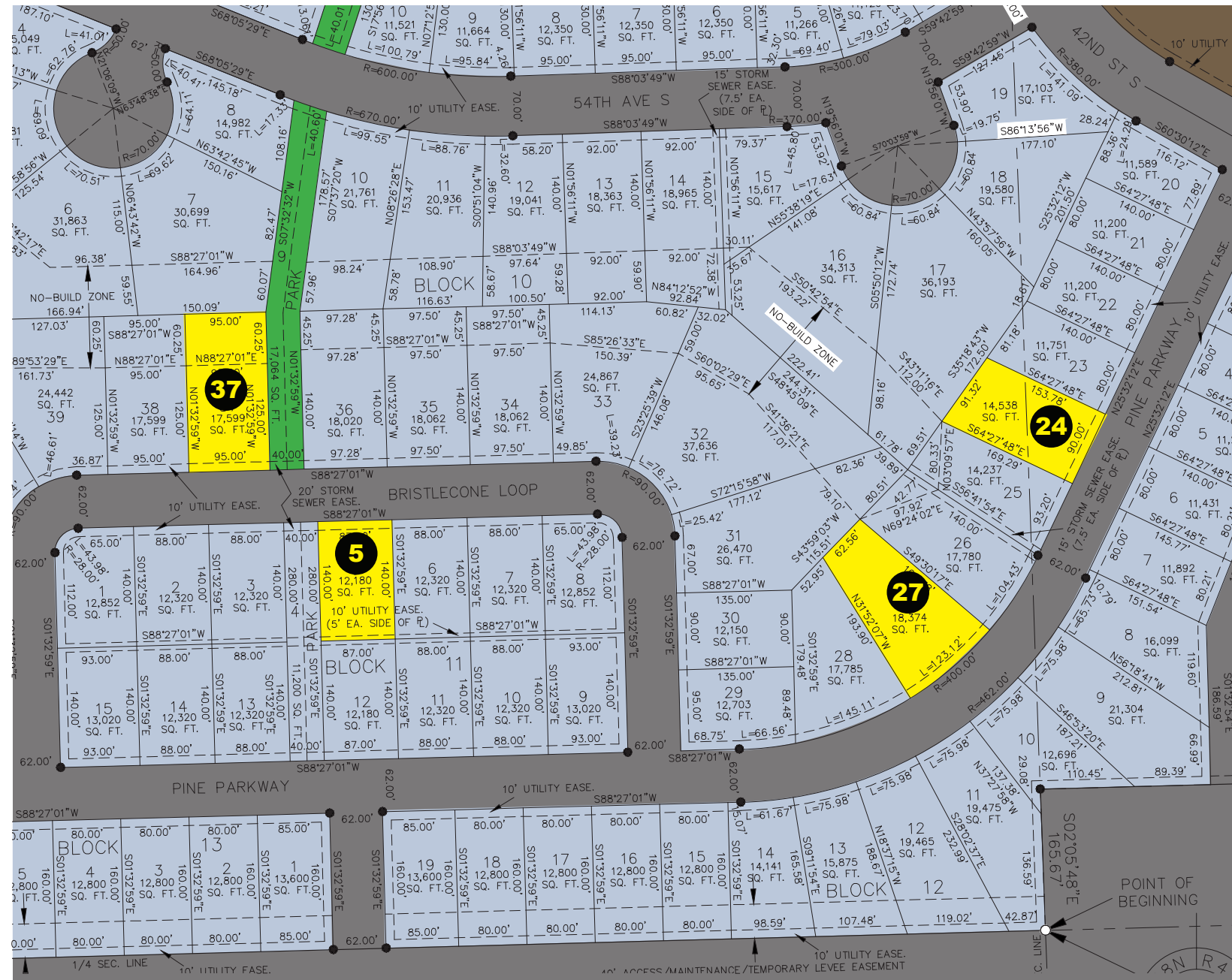


# The Pines at the District



- LOT 24 BLOCK 10 (4219 Pine Parkway S) 90.00' x 153.78' **\$55,100**
- LOT 27 BLOCK 10 (4235 Pine Parkway S) 123.12' x 199.78' **\$59,900**
- LOT 37 BLOCK 10 (4259 Bristlecone Loop S) 95.00' x 125.00' **\$79,900**
- LOT 5 BLOCK 11 (4250 Bristlecone Loop S) 87.00' x 140.00' **\$67,900**



701 205-4979  
 5522 36<sup>th</sup> Street South  
 Fargo, North Dakota 58104  
[www.dabberthomes.com](http://www.dabberthomes.com)

